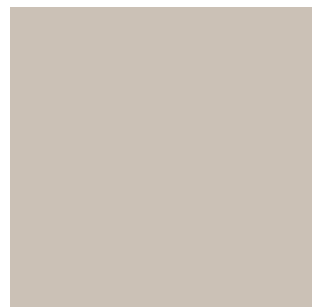
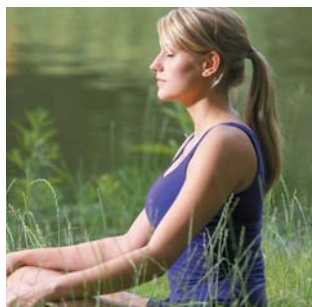


July 2008

REFLECTIONS NEWSLETTER



NEW LAND SALES & INFORMATION CENTRE NOW OPEN!

In case you haven't yet noticed, our brand new Land Sales & Information centre is now open in Reflections Boulevard, Tareit.

From the spacious deck, you'll get a lovely outlook across to where Reflections Wetlands Park is now well under construction. And inside, you can check out our new model which will help you put the whole estate into perspective.

We're open daily – 12pm-5pm, so don't hesitate to drop in to see us! Just look for our red banners out the front!

LAND SELLING FAST

Reflections Boulevard is a hive of activity, with the display village homes under construction and landscapers working to create an inviting entrance. Excavators and trucks are rapidly transforming the whole estate, including the area that will soon be the spectacular Reflections Wetlands Park. All this activity gives visitors a peek into what this estate has to offer, and the rapid pace of the land sales clearly shows that these visitors have been able to embrace the vision for this affordable, high quality estate.

All the releases in stages 1, 2 and 4 are now sold out, as well as over 50% of Stage 3. But there are still wonderful blocks available in Stage 3, and we've just released some of the final blocks in Stage 2 – near the wetlands. All blocks at Reflections are within an easy stroll of the wetlands park, and some will even have uninterrupted parkland views!

Don't let this opportunity slip by - act now to secure your land at Reflections, and be a part of what will surely be one of the most enviable of communities.

For more information or to see what is currently available, call Alice on **0407 806 762** - or drop in to see us today!

www.reflectionsestate.com.au 1300 BUY LAND



Reception Area - Land and Sales office



Exterior - Land Sales and Information centre



Pin Oak being craned into position in front of the Land Sales and Information centre

www.nationalpacific.com.au



REFLECTIONS NEWSLETTER

REFLECTIONS WETLANDS PARK TAKING SHAPE

Construction works are well advanced on what will soon be the first stage of Reflections Wetlands Park. This significant park will feature shared walking and cycling paths, a boardwalk and viewing platform, as well as numerous seating areas - all set amongst extensive drought tolerant landscaping.

Mature trees, such as the recently planted *Quercus Palustris* (Pin Oak) which stands just outside the newly opened Land Sales & Information centre, will create an immediate effect while the younger trees and shrubs establish themselves over time. To put the size of the wetlands park into perspective, the area will total almost 9 hectares, or 20% of the whole of the Reflections Estate land area, making it nearly 4.5 times the size of the playing area of the MCG.

On completion of the park, the shared walking & cycling path will provide a 1.85km circuit around the full length of the wetlands. A central boardwalk will cut across the wetlands creating two smaller circuits for those wishing to take a shorter stroll.

And a planned fitness trail will provide further exercise opportunities for those who take fitness more seriously.



Reflections taking shape

NEW DISPLAY VILLAGE ON TRACK FOR A SPRING OPENING!

Five of Melbourne's top builders are constructing their Reflections Estate Display Village homes, with the display village due to open in spring. These homes, many of which are new designs on display for the first time at Reflections Estate, will provide a wide range of styles and prices to meet everyone's lifestyle needs and budgets.

Visit the Reflections Estate website at www.reflectionsestate.com.au to register your interest in Reflections Estate, or view the DISPLAY HOMES page, for the latest update on the grand opening!



Artist's impression

See yourself at
REFLECTIONS

www.reflectionsestate.com.au
Call us for any enquiries:
1300 BUY LAND
(1300 289 526)

Phone

Alternatively, call
Alice Spurr (Sales Consultant)
0407 806 762

Visit us on Site

Land sales and information Centre
Reflections Boulevard.
Off Sayers road, near the corner of
Derrimut Road, Tarneit
Open daily 12 noon - 5pm

Head Office
(Corporate Enquiries)

National Pacific Properties
100 Franklin Street
Melbourne, 3000
(03) 9328 0300